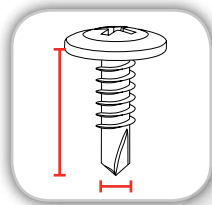


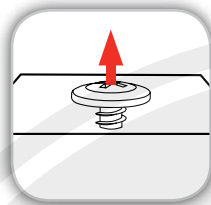
# Wafer Head Drywall Screw - Self Drilling

Diameter d (mm)	Length l (mm)	Withdrawal strength (N) In acc. with BS EN 14566+A1:2009, art. 4.4.3.2 (Test Report 39-12624/2)	Drilling Ability (secs) In acc. with BS EN 14566+A1:2009, art. 4.4.3.3 (Test Report 39-12624/3)	Tensile strength In acc. with BS EN 14566+A1:2009, art. 4.2 (Test Report 39-12624/1)	Protective Layer Thickness (µm) In acc. with BS EN 14566+A1:2009, art. 4.4.1 (Test Report 39-12624/4)
4.2*	13.5	950.40	2.48	ok	min ≥ 5.0
4.2*	16	950.40	2.48	ok	min ≥ 5.0
4.2*	19	950.40	2.48	ok	min ≥ 5.0
4.2*	25	950.40	2.48	ok	min ≥ 5.0

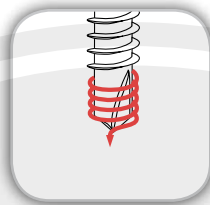
\*case hardened to a minimum of 0.05mm



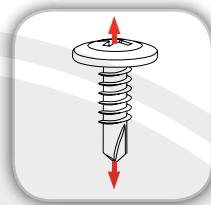
Geometrical



Withdrawal Parameter



Drilling Ability



Tensile Ratio



Durability

# TIMCO

# Wafer Head Drywall Screw - Self Drilling



## DECLARATION OF PERFORMANCE

DOP19 v2

We here by declare the following designated products  
**Wafer Head Drywall Screws - Self Drilling  
Diameter 4.2mm**

---

Have been tested under system 3, Annex V of the regulation (EU) no. 305/2011 (Construction Products Regulation), with the reference to the harmonised European standard BS EN14566+A1 2009 Mechanical fasteners for gypsum plasterboard systems - definitions, requirements and test methods.

**Factory Process Control (FPC)** has been established by the factory and independently audited by TUV Rheinland UK in accordance with ISO9001:2008.

This declaration of conformity is valid until there is a significant change in the product and declared characteristics. ie. raw material or change in production process.

---

Signed by:

A handwritten signature in black ink, appearing to read 'Simon Midwood', written over a large, faint circular watermark.

Name: *Simon Midwood*

Position: *Managing Director*

Date & Location: *03. 11. 2016  
TIMco House, CW5 6BJ*

This declaration is the responsibility of the importer

T.I Midwood & Co. Ltd. Green Lane, Wardle, Nantwich, Cheshire, CW5 6BJ

