



Product Information

- Fastening of cables and suspended ceilings.
- All steel non-flammable material.
- Fast and easy installation.

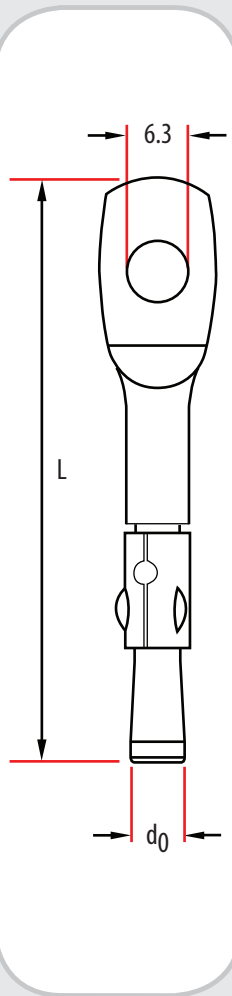
Key Features

- 6.3mm diameter hole
- Hammer-set - no special tools required
- Zinc plated (3-5 microns)

Materials



Concrete



L - Length
 d₀ - Drill Size
 6.3 - Eye Diameter (mm)

Wirehangers

TIMco Code	Size Ø x Length (mm) d x L	Eye Ø (mm)	Box Qty	Carton Qty	Pallet Qty
0660WH	6 x 60	6.3	100	1,800	64,800

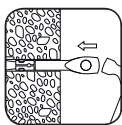
Technical Data

Substrate	Concrete ≥ 25 N/mm ²
Size Ø (mm)	6
Drill Hole Ø (mm) d ₀	6
Embedment Depth (mm) h _{ef}	45
Min Drill Hole Depth (mm) h ₀	50
Rec. Tensile Load (kN) N _{rec}	1.88

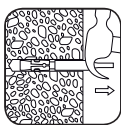
Installation Guide



1) Drill a hole to the required diameter and depth



2) Lightly tap the anchor into the hole



3) Set anchor using a claw hammer

Applications

